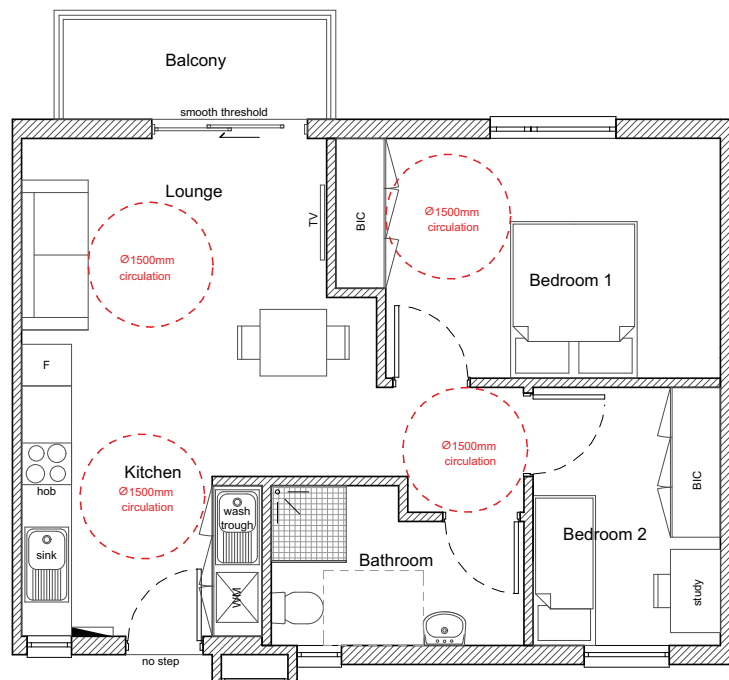


Universal Access Consultancy & Accessible Architecture

2019



Content

Studio Hiten Bawa (Studio HB) is pleased to present a breakdown of Universal Access consultancy services, explaining the opportunities offered through disability access audits, special design items and certifying your buidlings and or environments as accessible.

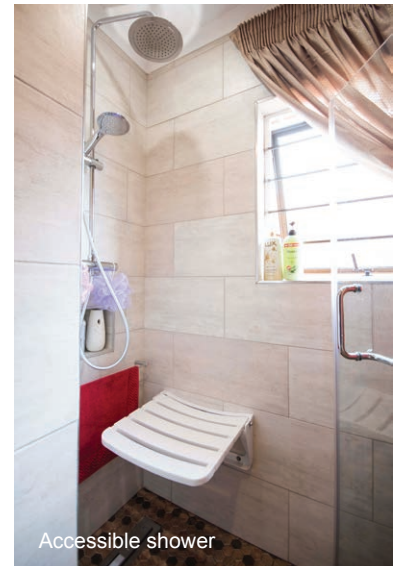
Within this document please find the following:

1. About Studio HB	1
2. Project Experience	2
3. What we can do for you	3
4. Examples of Accessible Architecture	4
5. Relevant certificates of registration.	8

1. About Studio HB

Studio Hiten Bawa (Studio HB) focuses on accessible architecture across wide variety of architectural and urban design projects in South Africa from housing to offices, retirement homes, educational institutions and public transportation projects. We aim to transform the built environment to become more inclusive and accessible to a wide spectrum of people possible including people with disabilities, the elderly and children.

Studio HB is a private company (Pty Ltd) with registration numbers 2016/468358/07, owned and managed by its founder, Hiten Bawa. Studio HB is an exempted Micro enterprise (EME) and Level 1 B-BBEE company.



Accessible shower

Management Profile & Qualifications

Hiten Bawa

Hiten Bawa is a qualified architect with over 6 years of experience and an internationally registered Accessibility Consultant with Global Alliance on Accessible Technologies and Environments (GAATES).

Hiten specialises in working with clients and architects on designing accessible environments and ensuring compliance with access related matters during the design stages of work. He had audited a number of buildings for the University of Johannesburg, Wits University and the Department of Higher Education and Training (DHET).

He presented his work on Universal Access at conferences focused on disability issues and transformation.

Professional Qualifications:

2013 Master of Architecture (Prof), University of Cape Town.

2012 Bachelor of Architecture (Honours), University of Cape Town.

2011 Bachelor of Architectural Technology, University of Johannesburg.

Professional Affiliations:

South African Council of the Architectural Professions (SACAP)

South African Institute of Architects (SAIA)

Global Alliance on Accessible Technologies and Environments (GAATES)

Tel: +27 (0)11 646 7419

Cell/FaceTime: +27 (0)83 305 0367

Email: hiten@hitenbawa.co.za

Web: www.studiohb.co.za



Pull-out racks



Pull-down rail

2. Project Experience

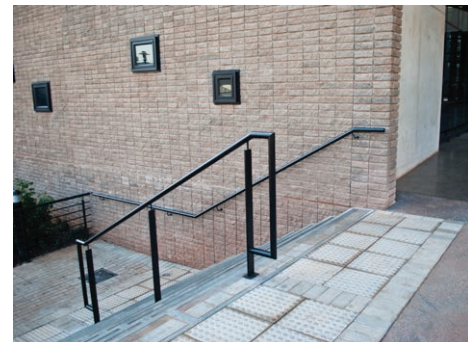
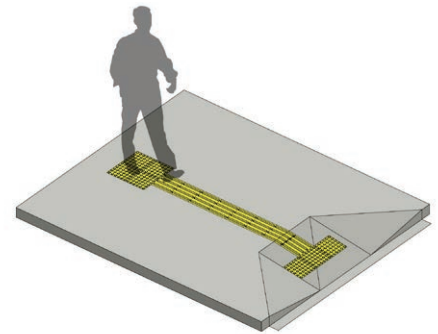
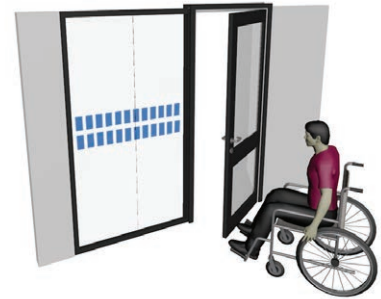
Employer, contact person & telephone no.	Description of event	Detail of work undertaken, nature of work & value	Date undertaken
Martin Engelbrecht Architects. Raakhee Suka-Nathoo raakhee@mea.co.za	Disability Access Report for a trade licence application at the City of Cape Town.	COMMERCIAL BUILDING Disability access audit of council submission drawings of an existing KFC fast food outlet in Hout Bay, Western Cape.	September 2018
Savage & Dodd Architects, Heather Dodd heather@savagedodd.co.za	Johannesburg Social Housing Company (JOSCHO) Standardised housing research project.	SOCIAL HOUSING The research project was a collaboration with Savage & Dodd Architects on the feasibility of standardised housing plans. Drafted a report on accessibility guidelines for social housing in South African context. PROJECT VALUE: R 200 000.00	August 2018
Johan Oosthysen	Alterations to an existing retirement home for private clients with disabilities.	RETIREMENT HOME Internal renovation of an existing retirement home in Montana Truine, Pretoria, to be fully accessible for an elderly couple. This include remodelling the kitchen and bathrooms with accessibility features. PROJECT VALUE: R 800 000.00	February 2018 - June 2018
ARG Design Alastair Rendall studio@arg.co.za +2721-448-2666	Implementation of Section A, B & C of the Rustenburg IPTN system in Rustenburg, North-West Province.	PUBLIC TRANSPORTATION The project was aimed at redesigning 3km of roadworks within Rustenburg CBD and constructing new BRT bus stations for Rustenburg RRT along Nelson Mandela Drive, President Thabo Mbeki Drive and Oliver Tambo Drive. The project included the following: - Development of project-specific Universal Access standards and guidelines - Review of all engineers' drawings to ensure that the project was in line with National Department of Transport requirements - Audit appraisals - Design pedestrian crossings, layout of drop-kerbs and tactile ground surface indicators. - Landscaping layout and details. - Overseeing the implementation of Universal Access standards on engineers' drawings PROJECT VALUE: R1,5 BILLION	December 2016 - March 2018
LHA+UD Ludwig Hansen. ludwig@ludwighansen.co.za. +2711 486 1468.	City of Joburg Office Space Optimization Project (OSOP) involving the design of new municipal offices in each regions.	URBAN DESIGN The project aimed to address the urban decay in segregated urban nodes and providing access to municipal services in each regions. The project included the following: - Urban design framework - feasibility studies - bulk calculations - architectural proposals - 3D renderings & visualizations	2015 - 2016
Wits Campus Development & Planning Unit Emmanuel Prinsloo emmanuel.prinsloo@wits.ac.za. +2711 717 9014	New Disability Rights Unit office for Wits University.	HIGHER EDUCATION Assisted with the drafting of the project brief and product specifications for the client. Access audits of construction drawings and implementation of accessible features. PROJECT VALUE: R 800 000.00	2016
Wits Campus Development & Planning Unit Emmanuel Prinsloo emmanuel.prinsloo@wits.ac.za. +2711 717 9014	New urban foyer for Wits University, Braamfontein West Campus.	HIGHER EDUCATION The project involves: - Access audits of existing environment. - Access audit of construction & landscaping. drawings including details for accessible features. - Consultancy services to appointed contractors. PROJECT VALUE: R 3 000 000.00	2014-2015

3. What we can do for you

As access consultants we look at how diverse **PEOPLE** use space with ease and identify potential barriers to access. We believe that everyone should benefit from an accessible environment be it a parent using a pram, a tourist with a roller luggage, a visually-impaired person, your grandparents, a fireman or a paramedic using a stretcher bed.

We are here to make your building design and environment accessible through one of our service offerings:

- Disability Access Audit of conceptual drawings through to construction drawings and compliance with various legislative requirements relating to occupational health and safety, fire protection, access and employment equity.
- Performance Solutions for access issues in line with **SANS10400** and **ISO 21542** guidelines. (to resolve access barriers that are already built that may be justified as being acceptable.)
- Project specific design guidelines and standards for social housing, public transportation, educational institutions and other building typologies.
- Bespoke design solution to suit a particular individual need.
- Home modifications with barrier-free living solutions.
- Creating accessible units in social housing and residential developments.
- Dementia design and aged care solutions.
- International projects outside of South Africa are required to meet strict building codes relating to access prior to building approval. We can ensure your designs comply with a particular country's building codes.
- Issue **Form 4, Certificate of Completion** to prove compliance with accessibility requirements and certify your property as accessible.



4. Examples of Accessible Architecture



Project: House O Retirement home
Year: 2018.
Location: Pretoria. South Africa.
Client: Private
Budget: \$76 000.00
Services: Full architectural services.

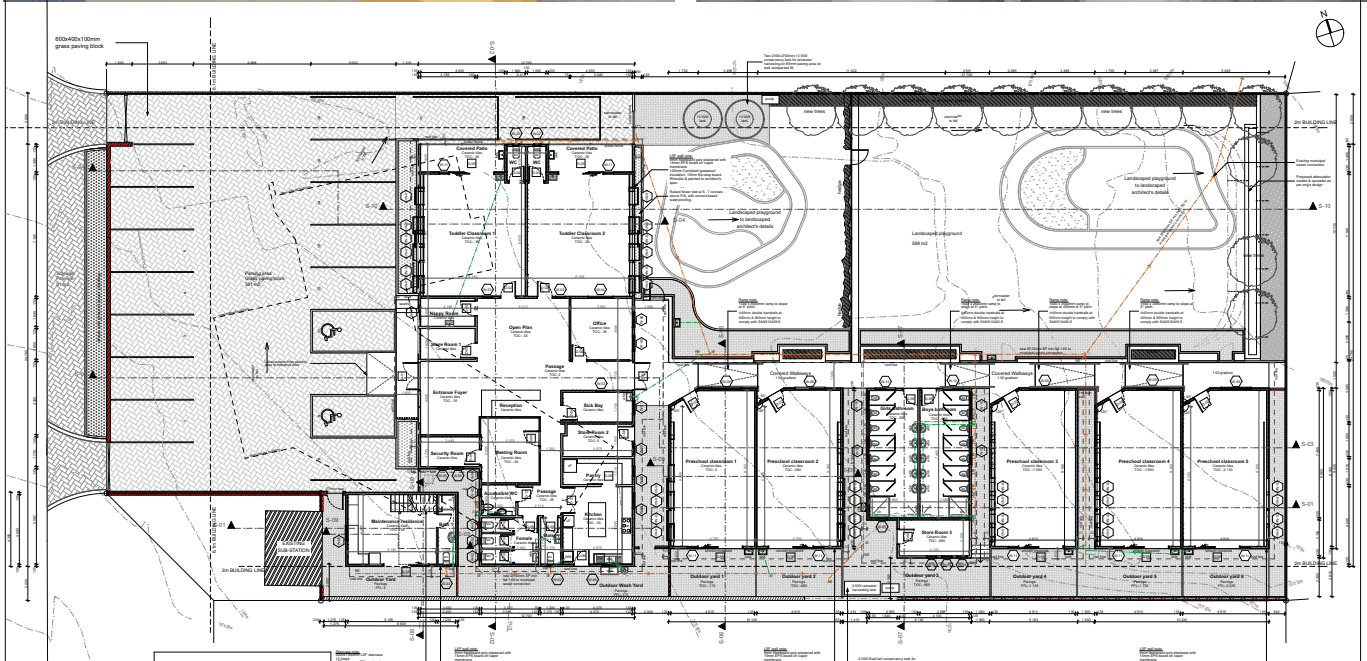
Description: House O is an internal renovation of an existing retirement home in Montana Truine, Pretoria.

The owners are a retired couple with one using a motorised wheelchair for mobility. The existing house was renovated to be fully wheelchair accessible in all spaces and be accommodating of the clients' immediate and future needs. Doorways have been widened to 900mm clear width to allow for wheelchair access and fitted with sliding doors instead of hinged door panels.

The kitchen was remodelled with low counter top, shelving at maximum height for reach, drawers, pull-out racks and carousels for hard to reach areas.

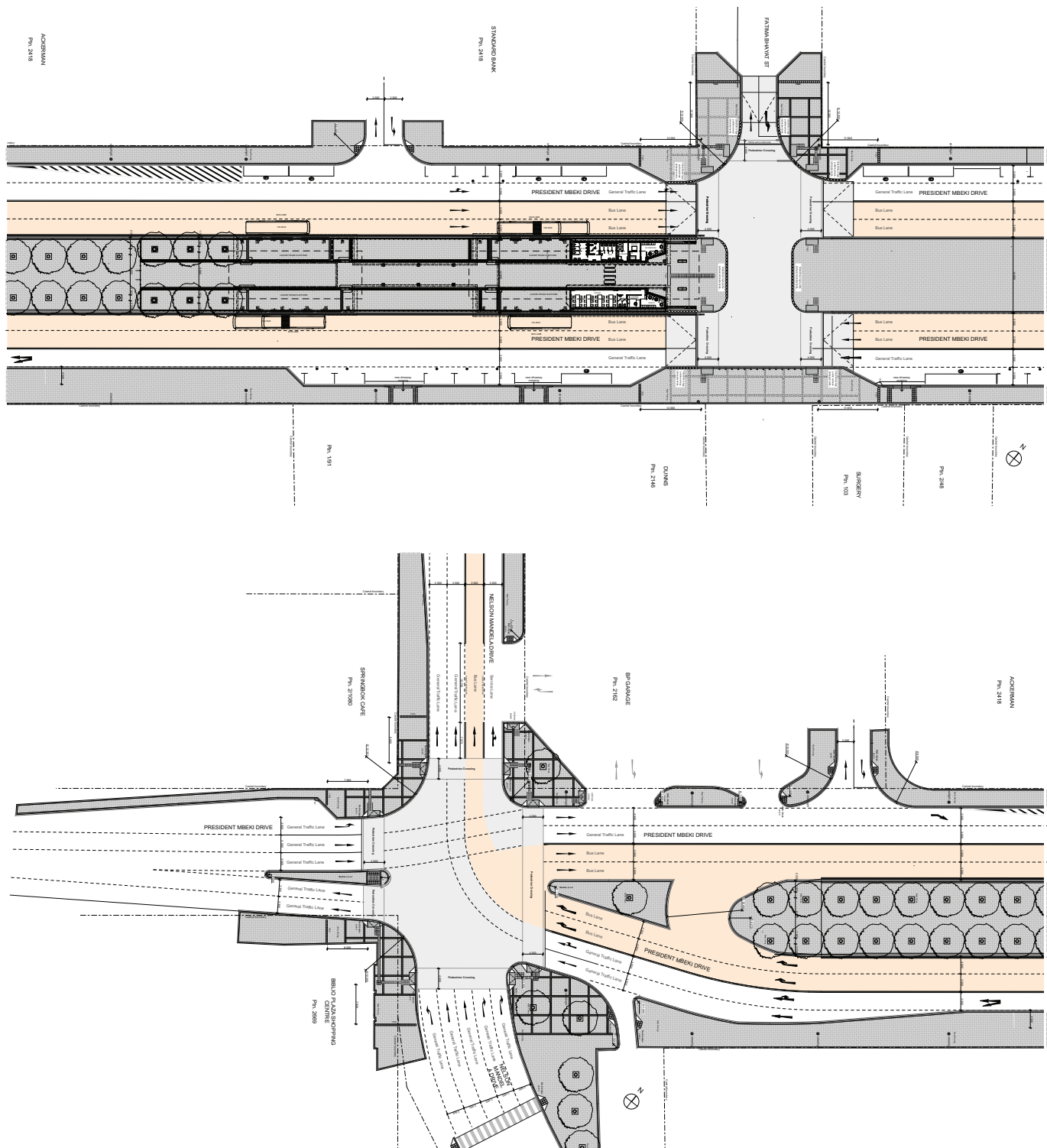
Bathrooms were reconfigured with the correct sanitary fixtures, leg room under the basins, flexible hand-held shower units in the bathtub and shower cubicle. Built-in cupboards were designed with sliding doors, drawers and pull-down rails to enable reach and ease of storage from a seated position.

The driveway and entrances were re-paved to eliminate the existing steps and steep slopes. All of the above changes provided the homeowners full access to their surroundings and a sense of independence in carrying out daily activities.



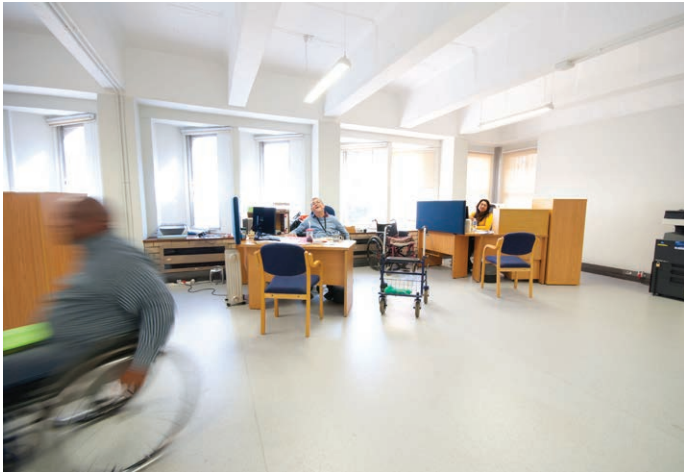
Project: **New Montessori Preschool**
Year: 2017-2018, awaiting council approval.
Location: Johannesburg. South Africa.
Client: Private
Budget: \$600 000.00
Services: Full architectural services.

Description: A new preschool for 136 children is currently being proposed in place of a dilapidated house. The school consist of seven classrooms and two playgrounds designed to fit the Montessori teaching requirements. Universal Access and accessibility is included in the design of the school to accommodate children with disabilities.



Project: Rustenburg Rapid Transit BRT system
Year: 2016-2019, under construction.
Location: Rustenburg, South Africa.
Clients: Rustenburg Municipality
Budget: \$126 millions
Services: Disability access consultancy, urban design and landscaping.

Description: Studio HB was appointed as sub-consultants with ARG Design to assist the project engineers and architects with universal access & landscaping drawings. Three kilometres of roadwork in the CBD area had to be redesigned and co-ordinated with other engineers' drawings to accommodate a Bus Rapid Transit system while ensuring accessibility for pedestrians, motorists and people with disabilities.



Employer: Ludwig Hansen Architects & Urban Designers

Project: New Disability Rights Unit Office

Year: 2016

Location: Wits University, Johannesburg. South Africa.

Clients: Wits Disability Rights Unit

Services: Access consultancy

Description: Assisted with the drafting of the project brief and product specifications. Access audits of construction drawings for barriers and implementing accessibility features.



Employer: Ludwig Hansen Architects & Urban Designers

Project: New Urban Foyer for Tower of Light, West Campus.

Year: 2014 - 2015

Location: Wits University, Johannesburg. South Africa.

Clients: Wits Campus Planning and Development Unit.

Services: Disability access consultancy

Description: Access audits of construction and landscaping drawings of appointed architects. Developed detail layout drawings for handrails and tactile ground surface indicators.

Developed a comprehensive Universal Design Standards and Guidelines for Wits University.



SOUTH AFRICAN COUNCIL
for the
ARCHITECTURAL PROFESSION

THIS IS TO CERTIFY THAT

Hiten M. Bawa

Is registered as a **Professional Architect**

In terms of The Architectural Professions Act, 2000 (Act No. 44 of 2000)

Registration Number

PrArch24751446

Registration Date

2016/03/01

Valid Until

2021/01/01

President

Registrar

This certificate is only valid if the Registered Person has paid all annual fees and has complied with the CPD requirements

International Certification of Accessibility Consultants – Built Environment (ICAC-BE) Program

This is to certify that

Hiten Bawa

Has been formally evaluated for demonstrated experience, knowledge and performance as an accessibility consultant and is hereby bestowed the international credential

Level 2 Advanced Accessibility Consultant

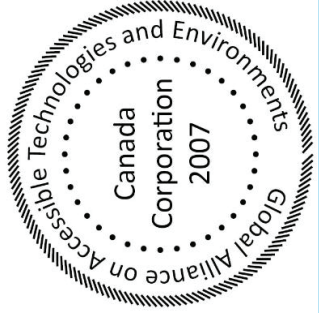
In testimony whereof, we have subscribed our signatures under the seal of the organization.



Victor Pineda, GAATES President
Chair, Board and Program Committee



Betty Dion, GAATES Founder
Chair, GAATES Expert Panel



ICAC-BE Number: 02-009-18
Original Grant Date: May 23, 2018
ICAC-BE Expiration Date: May 23, 2021

