

# UNIVERSAL ACCESS CONSULTANCY

## Methodology & Scope of Work



2017

## Content

---

Studio Hiten Bawa (Studio HB) is pleased to present a breakdown of Universal Access consultancy services, explaining the opportunities offered through access audits, special design items and implementing reasonable accommodations into building designs.

Within this document please find the following:

1. Company Description
2. Management Profile & Qualifications
3. Experience with similar projects
  
4. Approach & Methodology
  - 4.1. Special Studies
  - 4.2. Special Design services
  - 4.3. Special Management services
  
5. Relevant certificates of registration.

# 1. Company Description

Studio Hiten Bawa (Studio HB) focuses on implementing Universal Access solutions in a wide variety of architectural and urban design projects in Johannesburg, Kimberley and Nelspruit. Work undertaken has focused on accessibility issues in higher education environments, workplaces, housing and urban design.

Integrating marginalised communities into all aspects of the built environment, providing them with accessible architecture is a primary focus of Studio HB. Hereby our work focuses on how to integrate sectors of society, such as people with disabilities, the elderly, street traders and taxi operators, historically marginalised in the urban context. How to provide them with an architecture and a place within the city that enables them, enables their endeavours, provides a sense of ownership and identity, and possibly even a sense of pride.

# 2. Management Profile & Qualifications

### Hiten Bawa

Hiten Bawa is a qualified architect and Universal Design Consultant with a Masters of Architecture (Prof) from the University of Cape Town, 2013. His career started in 2009 and has worked for Creative Axis Architects, ARG Design and Ludwig Hansen Architects & Urban Designers (LHA+UD).

Hiten had audited a number of buildings for the University of Johannesburg, Wits University and the Department of Higher Education and Training (DHET). The Universal Access standards & guidelines formulated by Hiten had been accepted by the DHET as a standard for all higher education institutions in South Africa. He presented his work on Universal Access at conferences focused on disability issues and transformation.

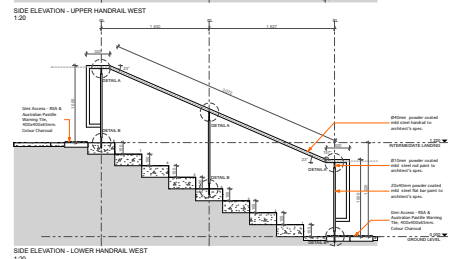
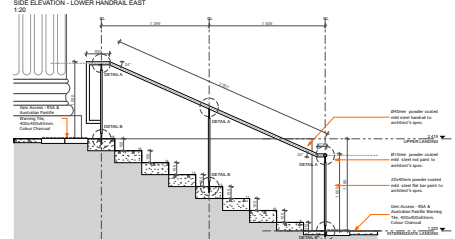
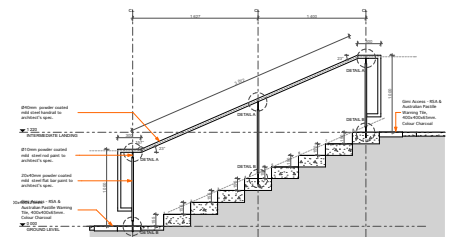
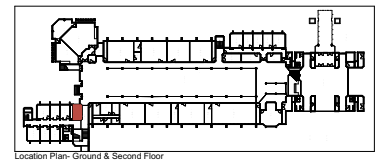
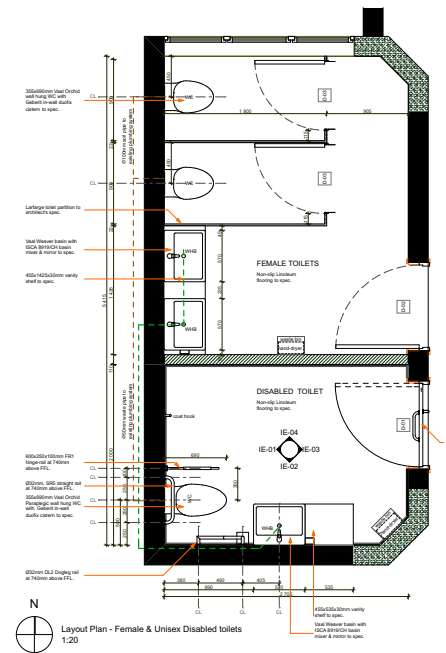
### Professional Qualifications:

2011 Bachelor of Architectural Technology, University of Johannesburg.  
 2012 Bachelor of Architecture (Honours), University of Cape Town.  
 2013 Master of Architecture (Prof), University of Cape Town.

### Professional Affiliations:

South African Council of the Architectural Professions (SACAP)  
 South African Institute of Architects (SAIA)  
 Gauteng Institute of Architecture (Gifa)

Tel: +27 (0)11 646 7419  
 Cell: +27 (0)83 305 0367  
 Email: [hiten@hitenbawa.co.za](mailto:hiten@hitenbawa.co.za)  
 Web: [www.hitenbawa.co.za](http://www.hitenbawa.co.za)



### 3. Experience with similar Projects

---

Hiten Bawa had been appointed as a Universal Access consultant for the University of the Witwatersrand on behalf of LHA+UD. Hiten also was appointed to provide disability access audits and Universal Access consultancy to architects of the two new universities being developed by the Department of Higher Education and Training (DHET), in Kimberley, Northern Cape and Nelspruit, Mpumalanga.

In these projects Universal Access was included in the urban design frameworks to ensure compliance with the National Building Regulations and meeting the DHET's transformation targets.

Through LHA+UD, the Wits Disability Rights Unit regularly consulted Hiten on resolving access issues, providing special design items and ensuring Universal Access compliance in existing environment.

Project	Description
Department of Higher Education & Training, Sol Plaatje University. Kimberley, Northern Cape.	Universal Access consultancy to appointed architects:  Ludwig Hansen Architects + Urban Designers, Activate Architecture, Savage & Dodd Architects, Wilkinson Mashilo Lambrechts GXY Architects, Design Space Workshop.
Department of Higher Education & Training, University of Mpumalanga. Nelspruit, Mpumalanga.	Universal Access consultancy to appointed architects:  Cohen & Garson, TC Design, GAPPS Architects, Conco Byran Architects
University of the Witwatersrand Campus Urban Design and Universal Access Consultants.	Universal Access consultancy to the Wits Disability Rights Unit and appointed architects:  Ludwig Hansen Architects + Urban Designers, MayetHart Architects, Savage & Dodd Architects, MMA Architects, Gunther Wagner Architects, Mashabane Rose Architects, 2610South Architects, Landscape Studio.
Rustenburg Rapid Transit Section A, B, C, Rustenburg. North West Province.	Universal Access consultancy to ARG Design
The Place, 1 Sandton Drive. Sandton, Johannesburg. Gauteng.	Universal Access Audit of existing environment and consultancy to Growthpoint Properties.

## 4. Approach & Methodology

---

The methodology and approach will progress in consultation with the client/ architect. However, based on experience gained on similar projects, that methodology and approach would include:

1. Special studies
2. Special design services
3. Special management services

### 4.1. Special studies:

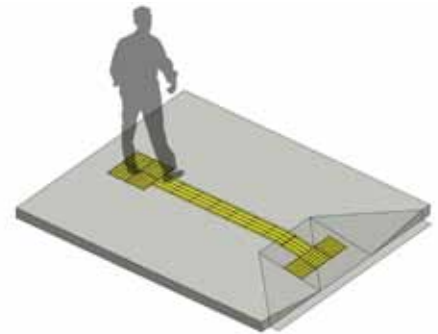
There are four types of environmental access audits:

- In-depth Universal Access Audit and recommendation reports on existing buildings or environment.
- Universal Access Audit of construction drawings and design proposals of planned and future buildings including internal modifications.
- Insitu Access Audit during construction phase.
- Post-Occupancy Access Audit report.

An environmental access audit is an assessment of a building or environment's compliance with the minimum requirements set out in the National Building Regulations, SANS10400 Part S, Facilities for Persons with Disabilities. The assessment takes form of a checklist that is used to identify the existing barriers to access and measure the level of compliance. The findings in the audit are used to provide a scope of the existing condition and guide an action plan for necessary improvements. The access audit is the first step on a long journey and is not an end in itself.

- Universal Design standards and guidelines

The standards and guidelines document will be tailored to the project specific needs and assist in ensuring consistency in terms of aesthetics, layout, construction and finishes. It intends to provide best practice guidelines and project specific Universal Design standards for future upgrades, refurbishments, construction and expansions.



## 4.2. Special design services

Preparation of special designs within or in relation to the facilities which are contemplated in this service, which may include:

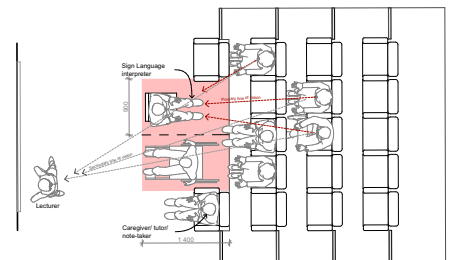
- Liaison with engineers, interior designers, architects and specialist consultants.
- Technical drawings and specifications of reasonable accommodations such as disabled toilets, lift installations, handrails, ramps and tactile ground surface indicators.
- Purpose-made items – the design and documentation of purpose made items such as office furniture, interior layouts, acoustic strategies and small environmental improvements.



## 4.3. Special management services

Management services may includes:

- Project management and implementation of access audit recommendations toward improving accessibility.
- Procurement of assistive technologies and features such as tactile ground surface indicators, audible traffic signals, grab rails, strobe lights and such.





**SOUTH AFRICAN COUNCIL  
for the  
ARCHITECTURAL PROFESSION**

THIS IS TO CERTIFY THAT

**Hiten M. Bawa**

Is registered as a **Professional Architect**

*In terms of The Architectural Professions Act, 2000 (Act No. 44 of 2000)*

**Registration Number**

**PrArch24751446**

**Registration Date**

**2016/03/01**

**Valid Until**

**2021/01/01**

**President**

**Registrar**

This certificate is only valid if the Registered Person has paid all annual fees and has complied with the CPD requirements